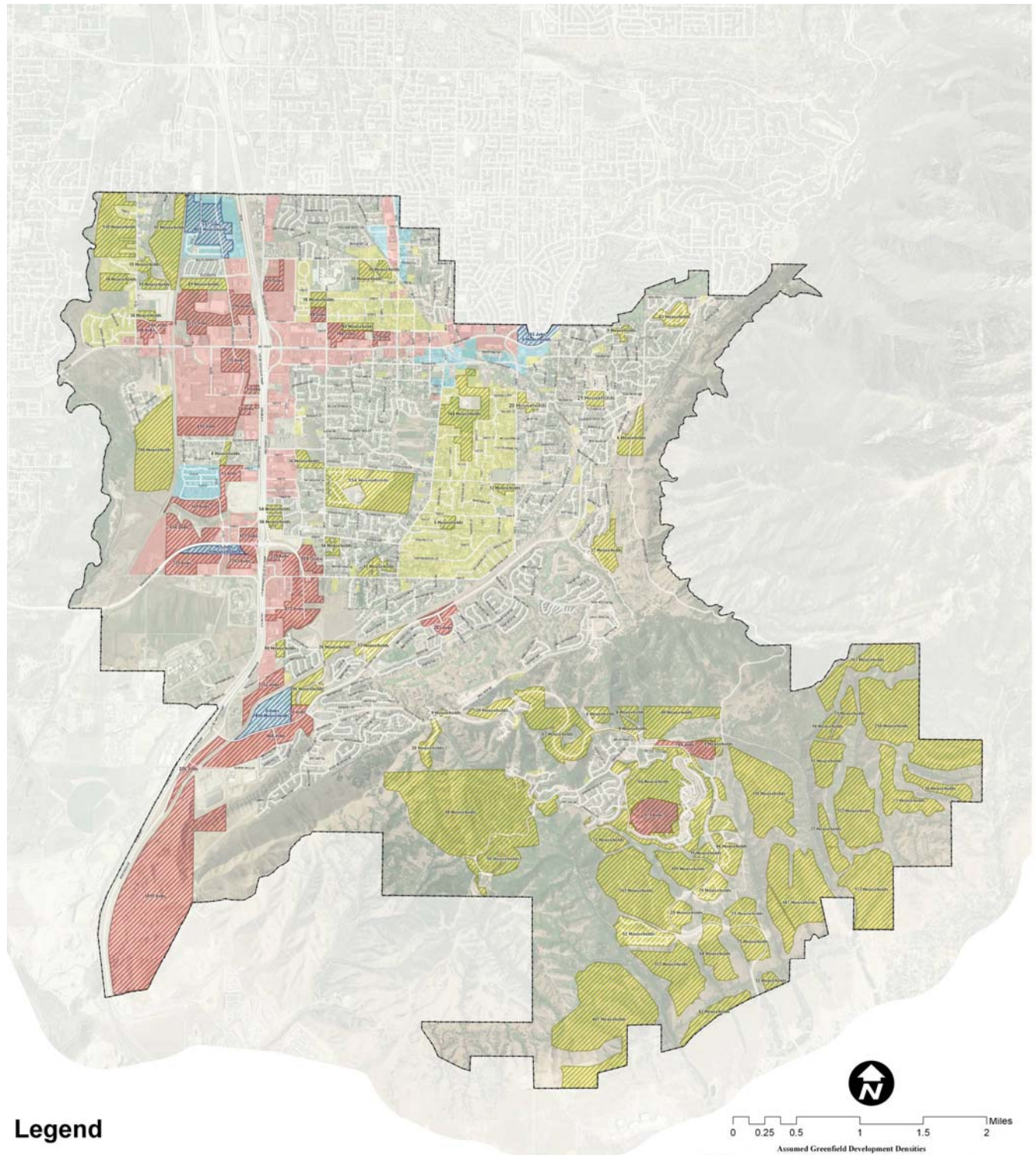


Future Development



Legend

- Greenfield Residential
- Infill Residential
- Greenfield Mixed Use (Town Center/Growth Area)
- Infill Mixed Use (Town Center/Growth Area)

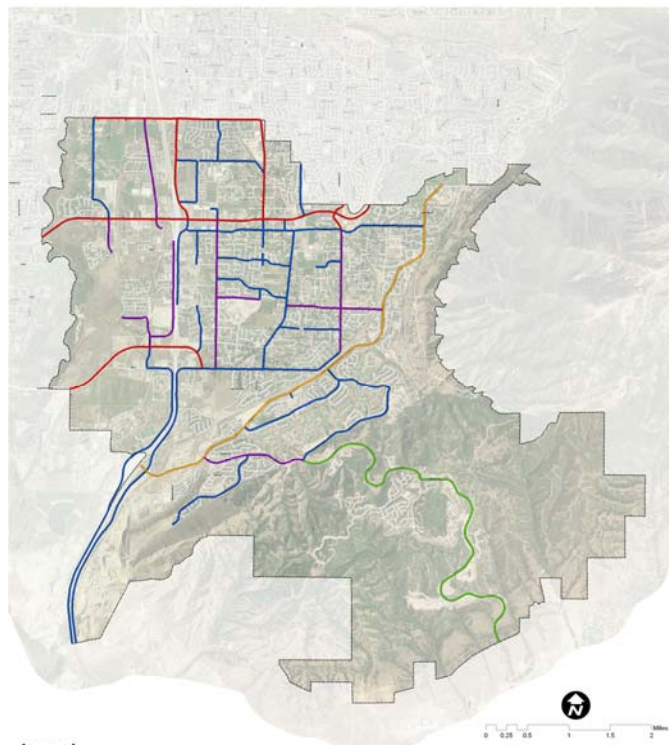
- Greenfield Employment
- Infill Employment

	Households	Population	Employment
2005	13,019	42,833	12,008
2030	19,583	64,428	37,164
Growth	6,564	21,595	25,156

Residential Development	Units per Acre	Employment Development	Jobs per Acre
Hillside Low Density	0.35	Neighborhood Commercial	10
Low Density	1.5	Community - Neighborhood Commercial	12
Medium Density	3	Community Commercial	13
Medium - High Density	6	Regional Commercial	16
High Density	12	Destination Commercial	16
Mixed Use (Town Center Growth Area)	20	Office	40
		Mixed Use (Town Center Growth Area)	12
		Industrial - Manufacturing	10
		Public - Civic	3

Roadway Level of Service

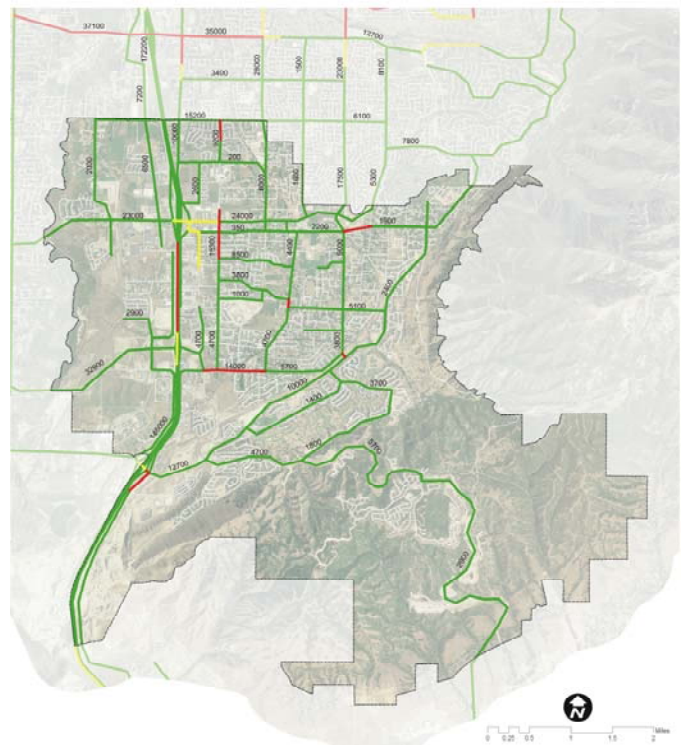
2005 Street System



Legend

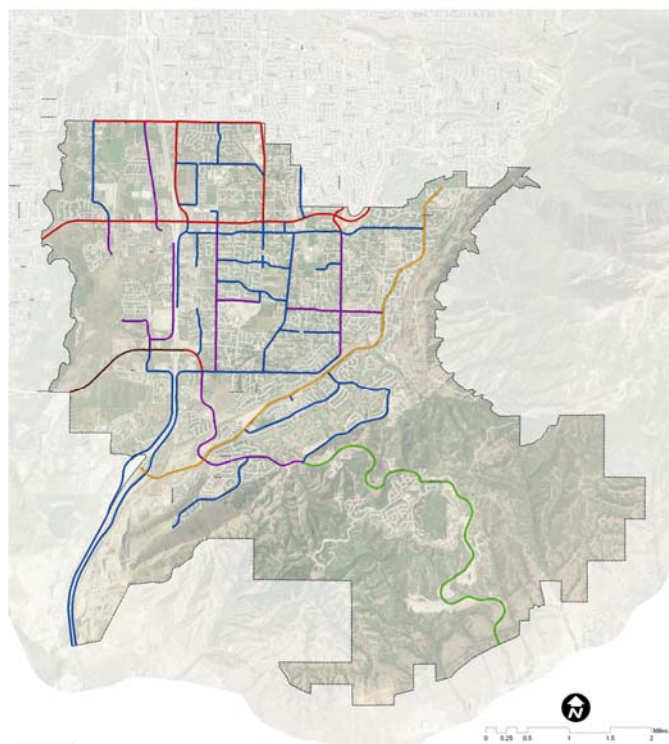
Functional Classification (Travel Lanes)
 Arterial (four lanes) Arterial (two lanes) Modified Collector (four lane) Major Collector (two lane) Minor Collector (two lane)

2005



Level of Service A - C D E - F

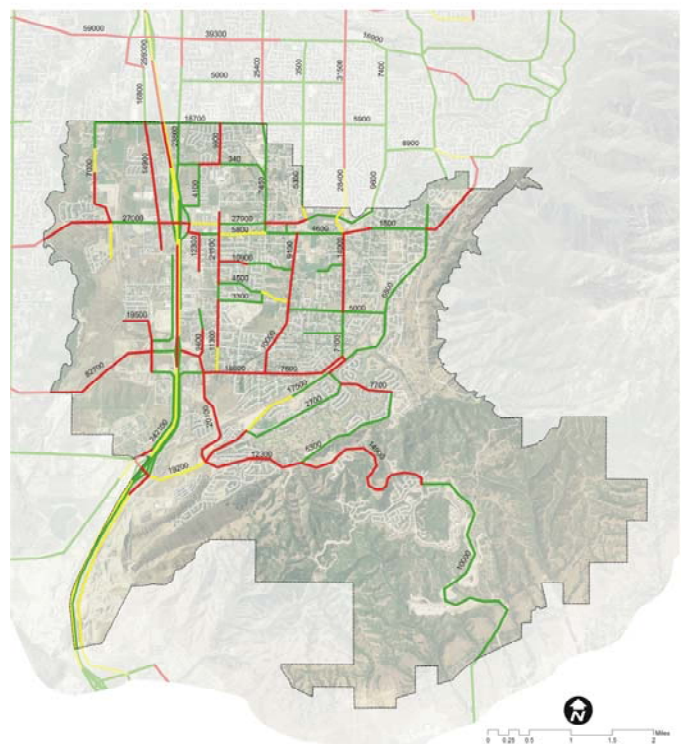
Existing Street System with No Improvements



Legend

Functional Classification (Travel Lanes)
 Arterial (six lane) Arterial (four lanes) Arterial (two lanes) Modified Collector (four lane) Major Collector (two lane) Minor Collector (two lane)

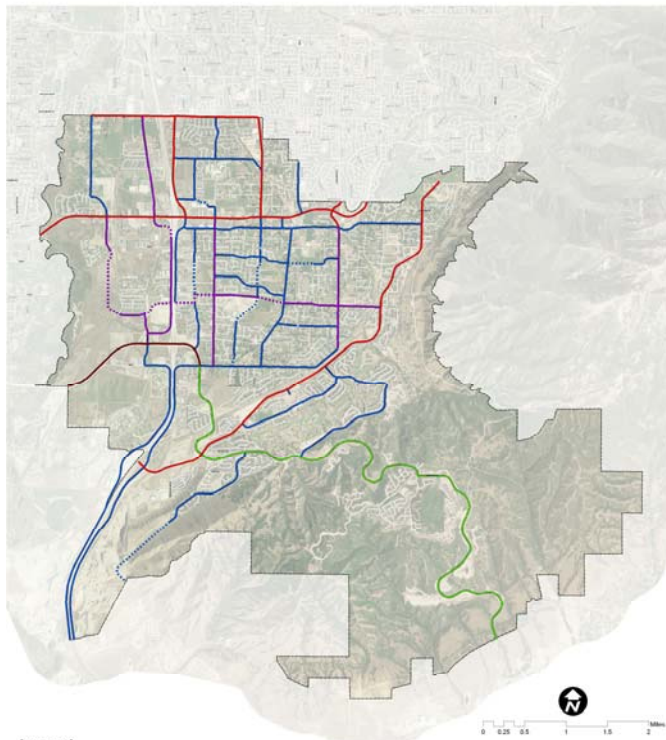
Draper Buildout with No Transportation Improvements



Level of Service A - C D E - F

Roadway Level of Service

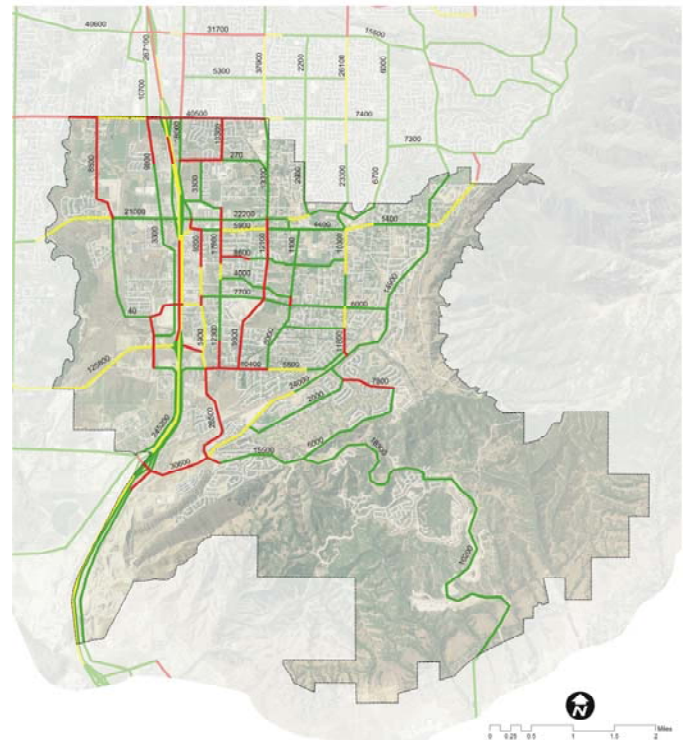
Existing Master Transportation Plan Street System



Legend

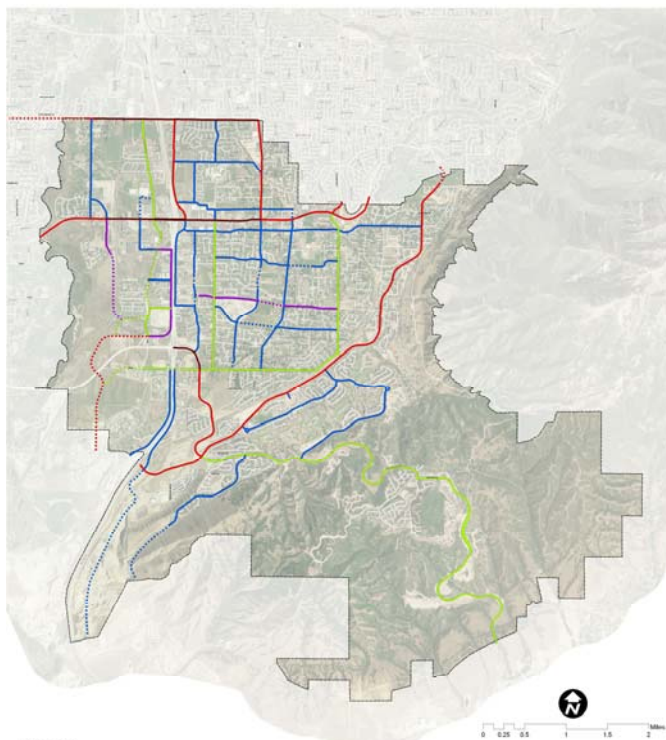
Functional Classification (Travel Lanes)
 — Arterial (six lanes) — Modified Collector (four lanes) — Minor Collector (two lanes)
 — Arterial (four lanes) — Major Collector (two lanes) — Future Minor Collector (two lanes)
 - - - Future Arterial (four lanes) - - - Future Major Collector (two lanes)

Draper Buildout with Existing Transportation Plan



Level of Service — A - C — D — E - F

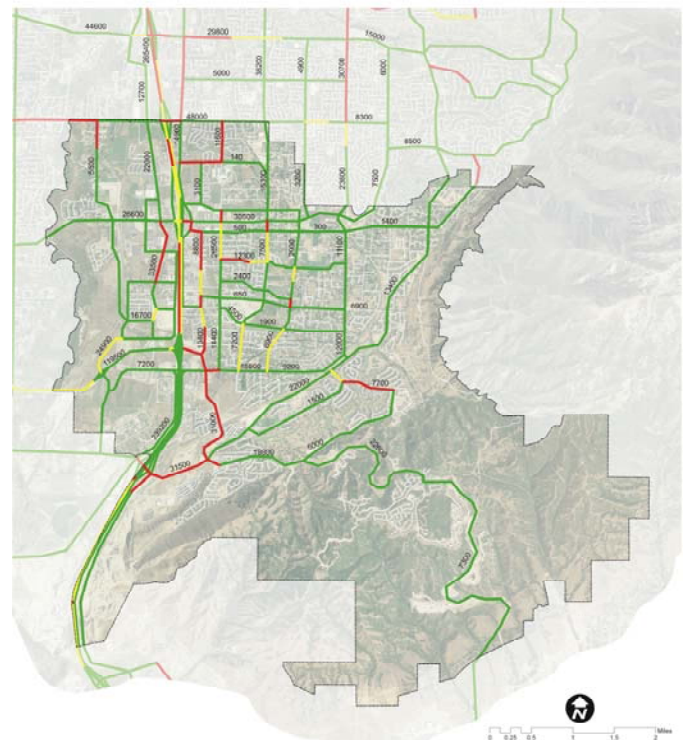
Proposed Street System



Legend

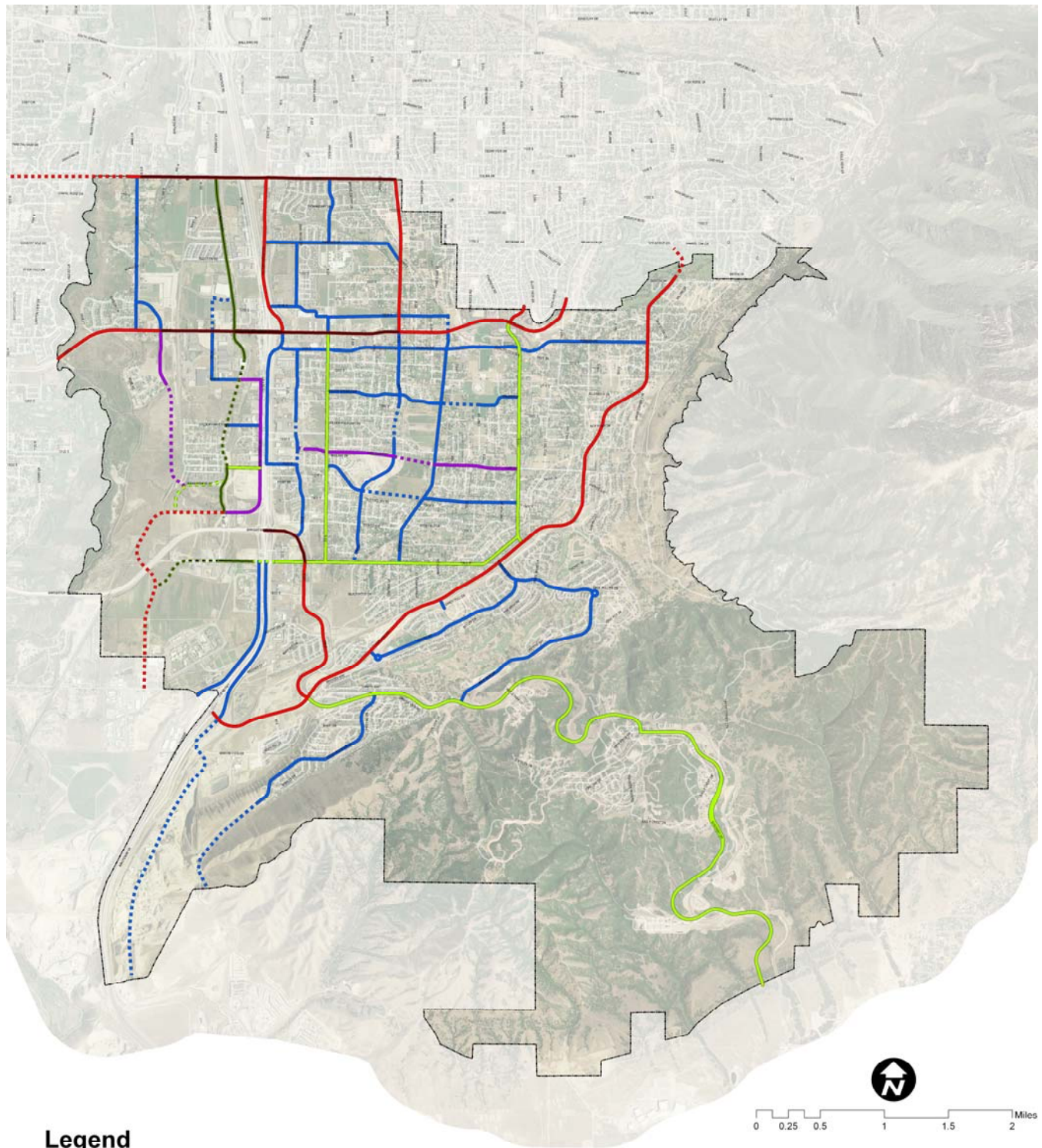
Functional Classification (Travel Lanes)
 — Arterial (six lanes) — Minor Arterial (four lanes) — Major Collector (two lanes) — Minor Collector (two lanes)
 — Arterial (four lanes) — Future Minor Arterial (four lanes) — Future Major Collector (two lanes) — Future Minor Collector (two lanes)
 - - - Future Arterial (four lanes)

Draper Buildout with Proposed Street System



Level of Service — A - C — D — E - F

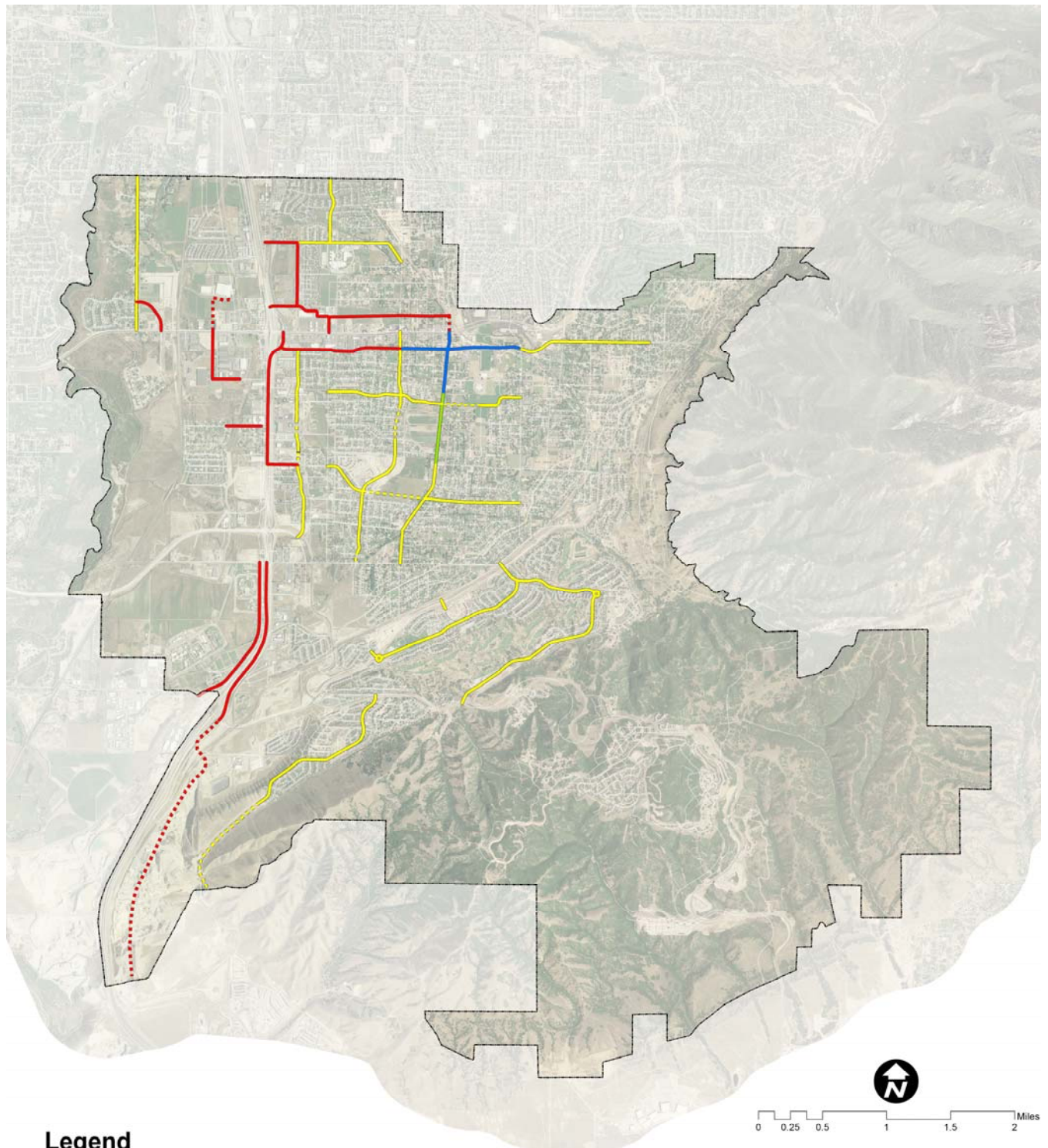
Full Functional Classification System



Legend

- | | | |
|-----------------------------------|---|---|
| — Arterial (seven lane) | — Minor Arterial (five lane) | — Major Collector (three lane) |
| — Arterial (five lane) | Future Minor Arterial (five lane) | Future Major Collector (three lane) |
| Future Arterial (five lane) | — Minor Arterial (four lane) | — Minor Collector (two lane) |
| | Future Minor Arterial (four lane) | Future Minor Collector (two lane) |

Minor Collectors

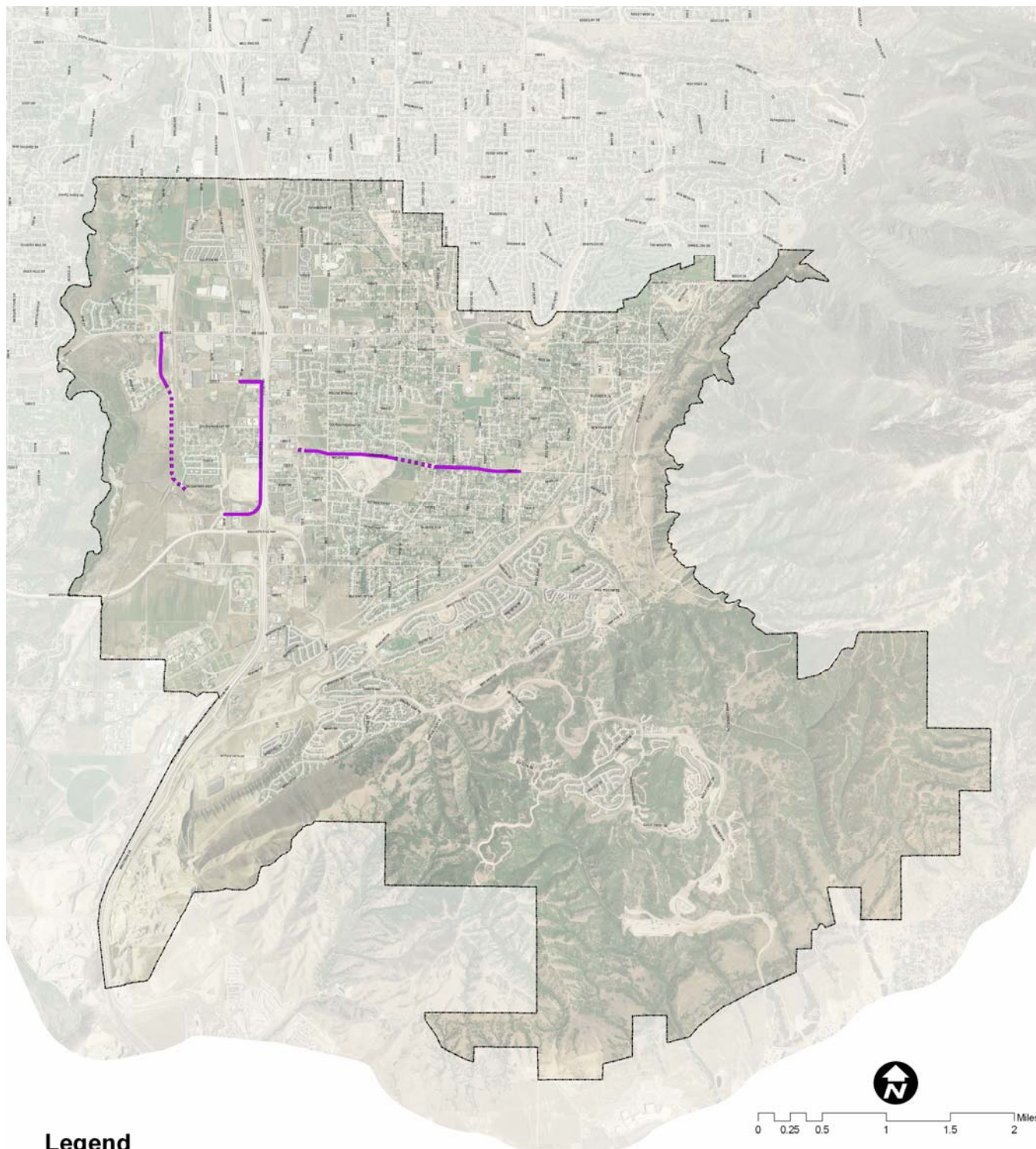


Legend

Minor Collector Type

..... Future Commercial — Commercial Future Residential — Residential — Downtown District — Rural Historic

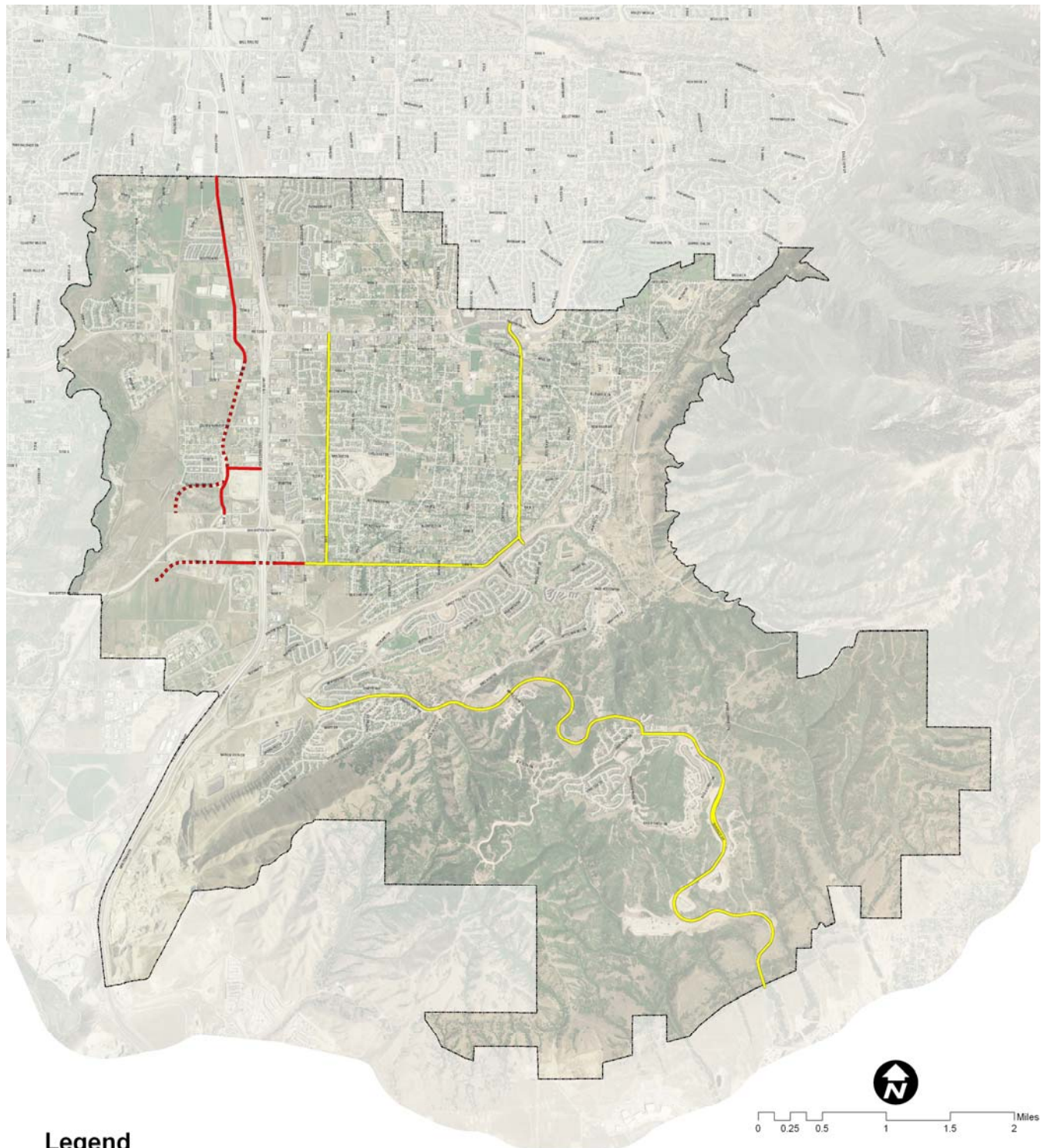
Major Collectors



Legend

— Major Collector Future Major Collector

Minor Arterials



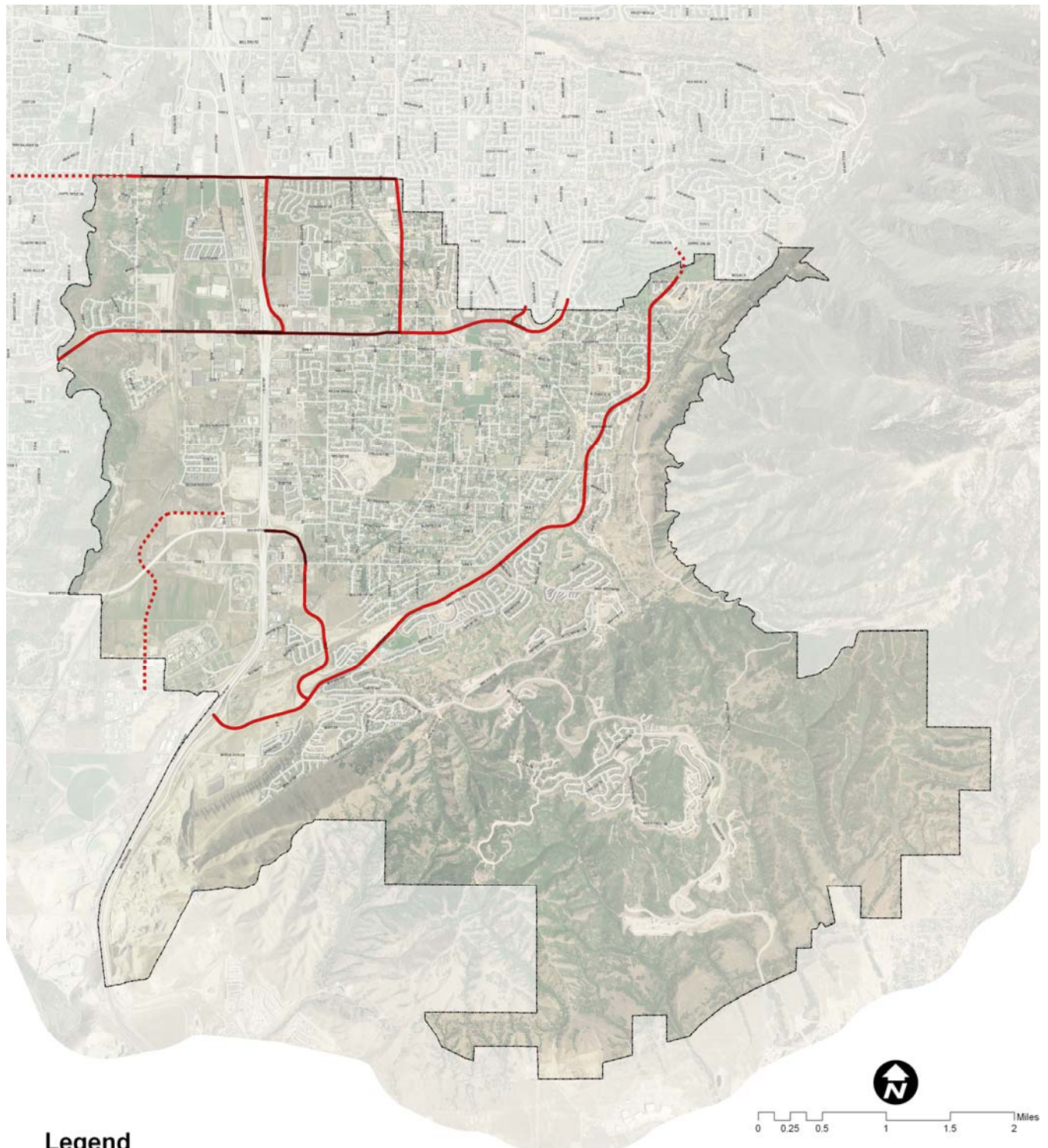
Legend

— Commercial Minor Arterial

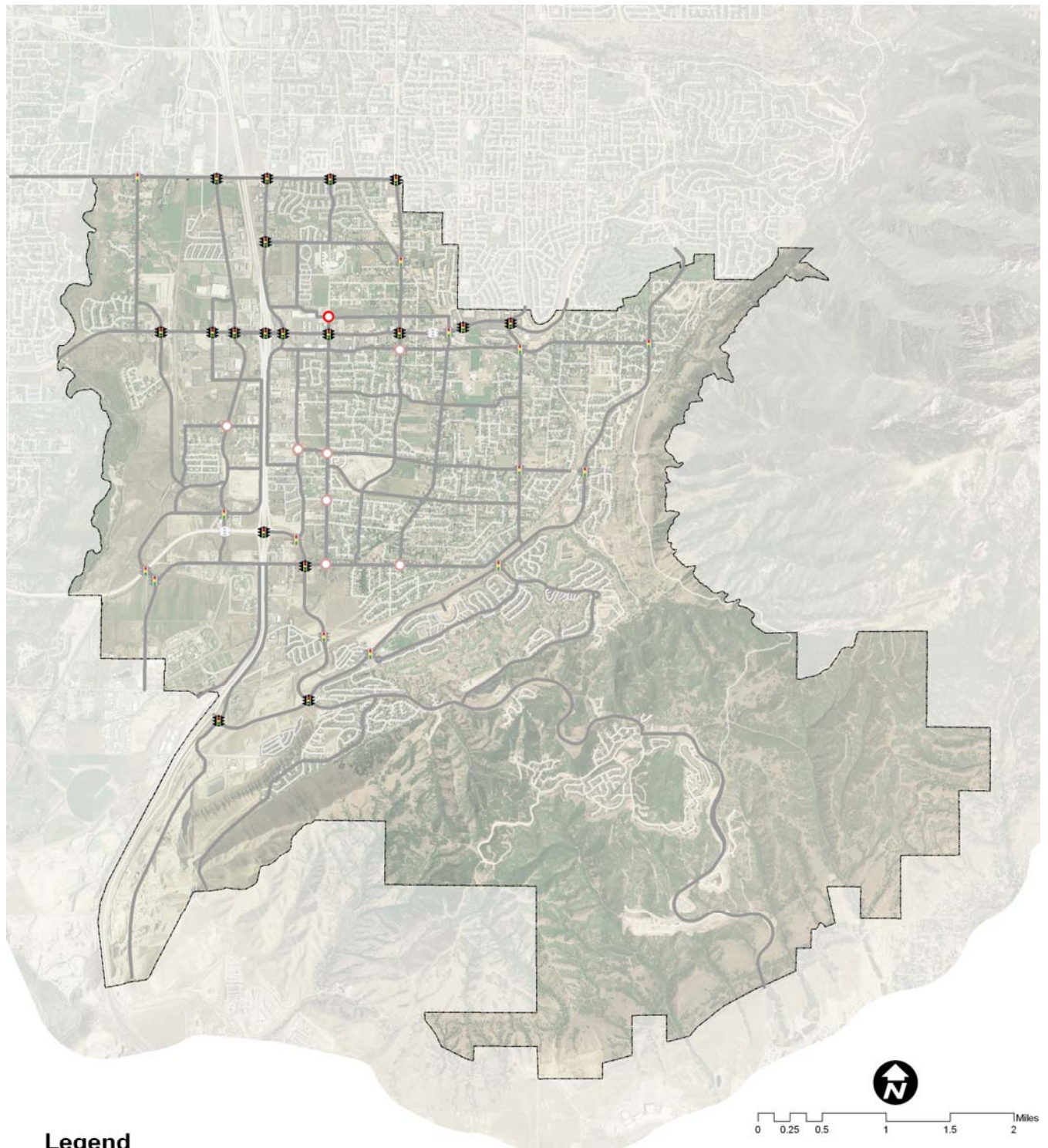
— Residential Minor Arterial

..... Future Commercial Minor Arterial

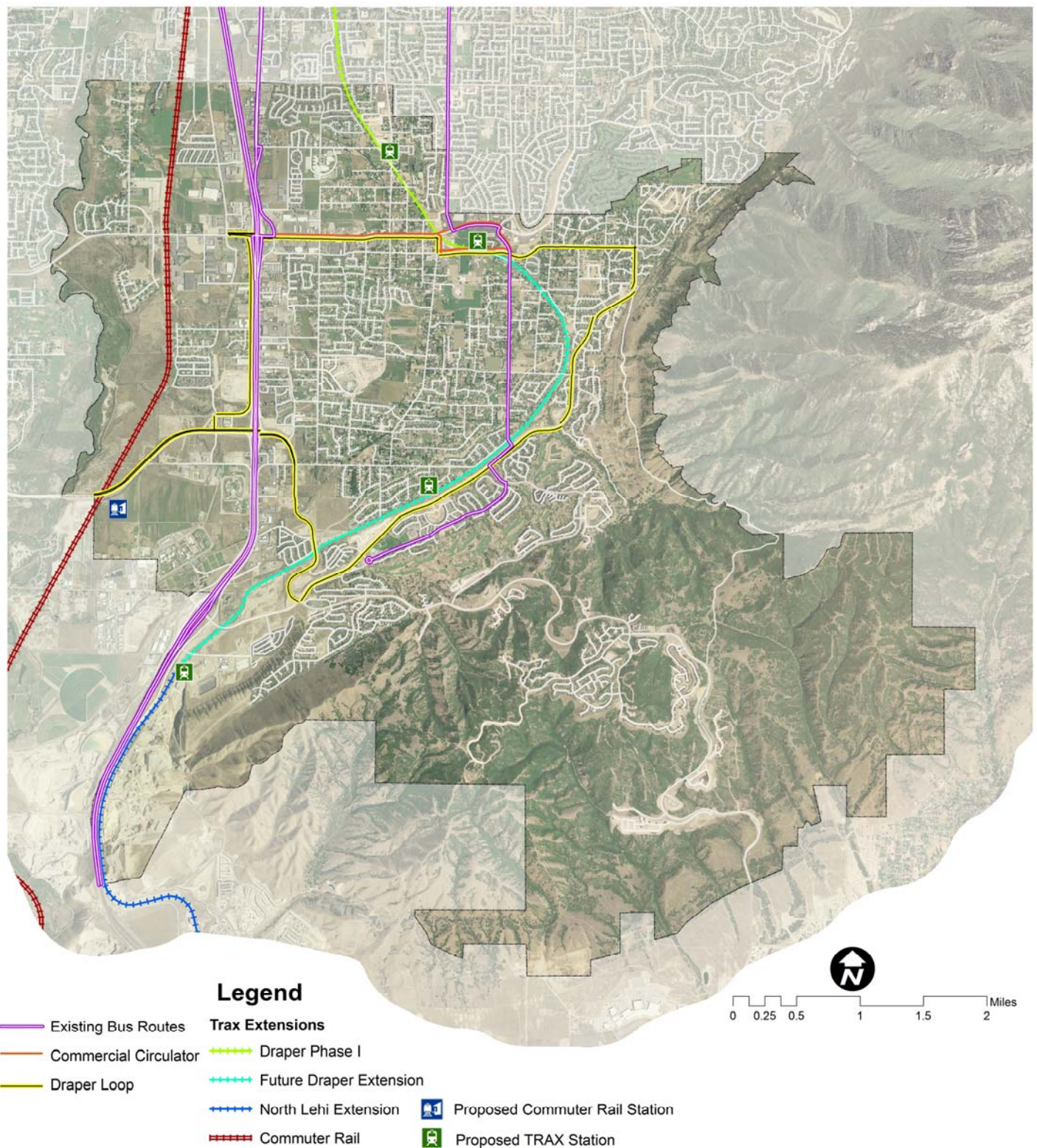
Major Arterials



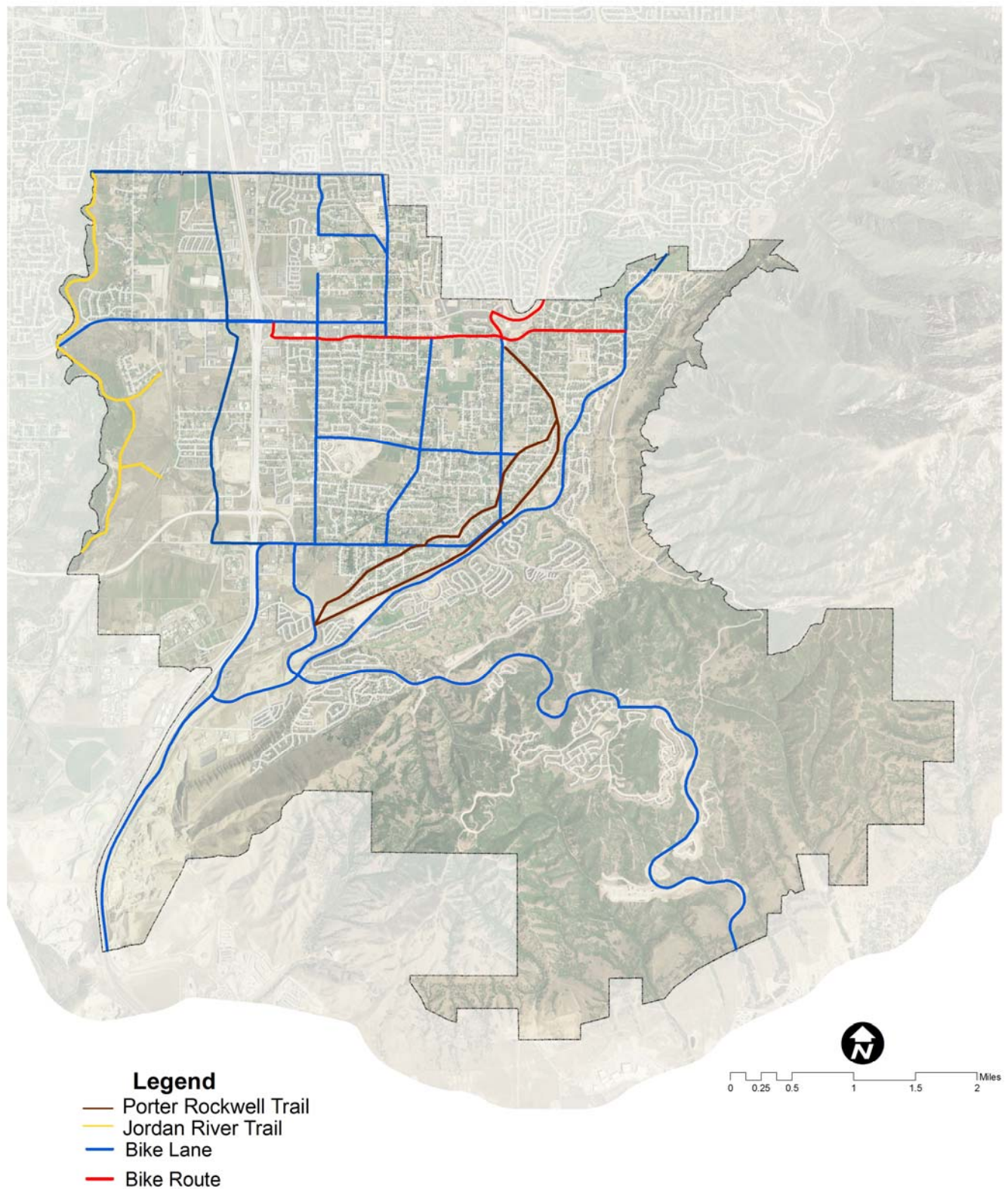
Existing and Future Signals/Roundabouts



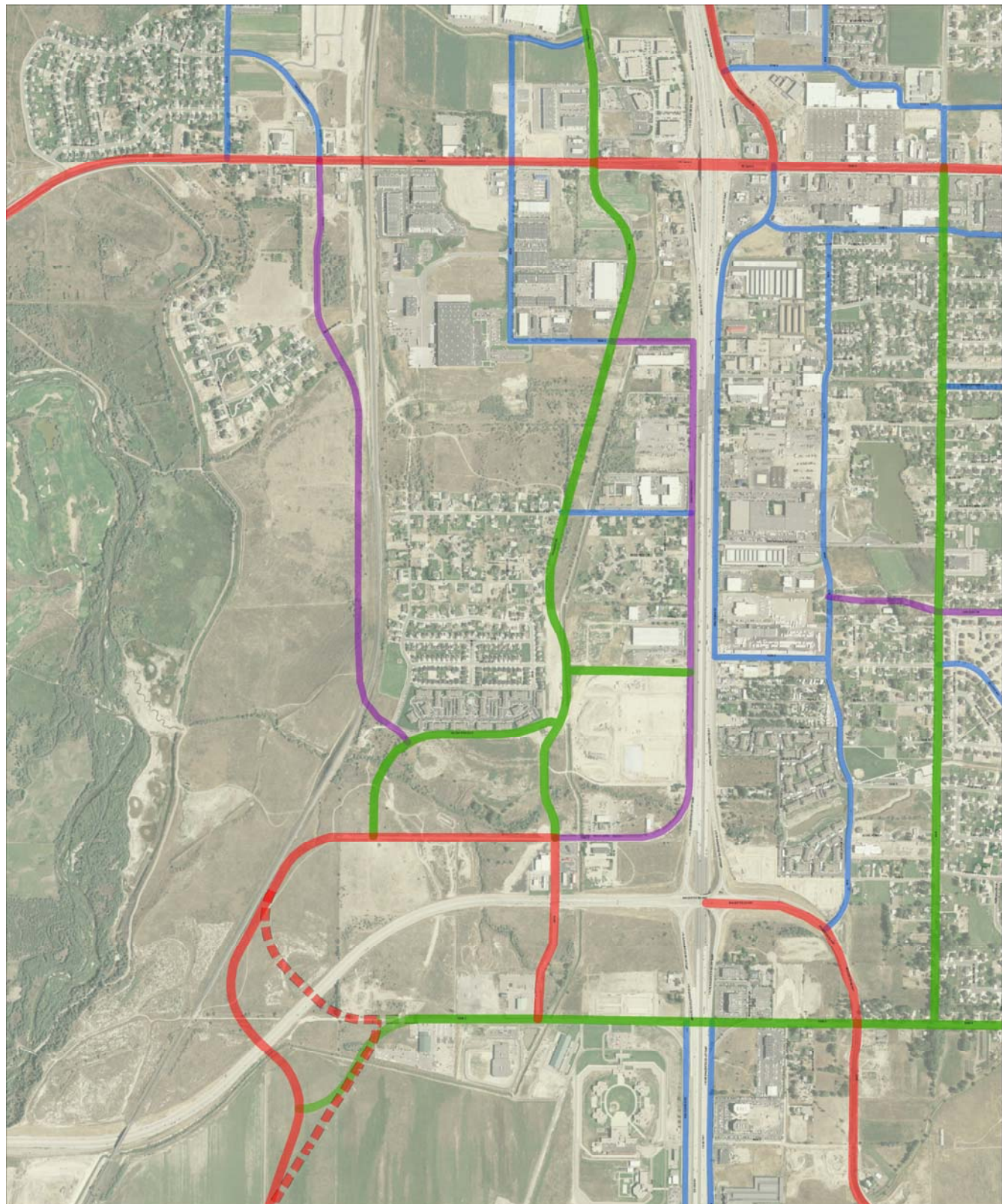
Transit Plan



Paved Bicycle Access



Westside Street System



Legend

- Arterial (100 ft)
- Minor Arterial (96 ft)
- Major Collector (74 ft)
- Minor Collector (66 ft)



0 250 500 1,000 1,500 2,000 Feet



LOCHNER

